



A CELEBRATION OF THE LIFE OF
RAYMOND TOPPLE

29th June 1933 - 20th June 2025



Gedling Crematorium

Thursday 17th July 2025
at 1.00 pm

A black and white portrait of an elderly man with white hair, looking directly at the camera with a slight smile. The background behind him consists of several blue and white diagonal stripes radiating from behind his head. The entire portrait is enclosed in a thin black border.

**Ray
Topple**
8th Dan

Ryecroft Judo Club Coach

BJA Senior Club Coach (Level 3)

Senior Examiner

IJF 'A' Referee

- Gold Medallist National Team Championships
- Bronze Medallist British Open
- Gold Medallist Midland Area Championships
- World Championships Referee
- 1st Reserve Referee Olympic Games
- Japanese Championship Referee
- Ex Chairman National Referee Committee
- G.B. Delegate to IJF Congress
- Candidate for Chairman BJA



Order of Service



A very young Raymond and Maureen.



GATHERING MUSIC

Air on a G String

J. S. Bach

Academy of St Martin in the Fields

MUSIC ON ENTRY

Symphony No. 7, 2nd Movement

L. V. Beethoven

WELCOME AND INTRODUCTION

MEMORIES

from Linda



All daughters spent a lot of time on their dad's shoulders when they were small.

*Linda remembers strangling him once (by mistake),
causing them both to collapse on the ground, but no serious injuries.*



MUSIC FOR REFLECTION

I Believe
Frankie Laine

TRIBUTE

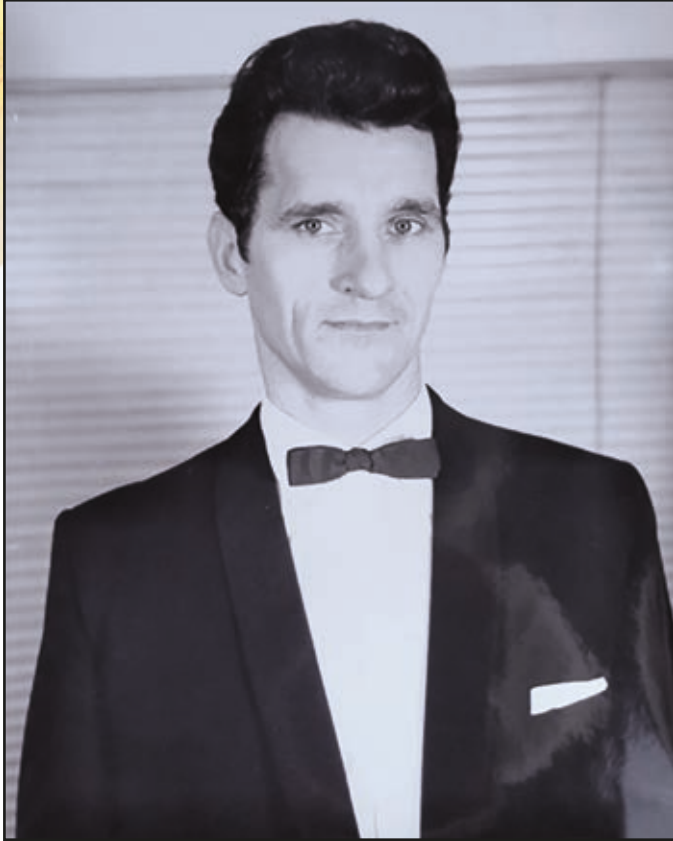
from Keith Merrick, British Judo

MUSIC

Night And Day
Tony Bennett

TRIBUTE

from Nick Hawke, Ryecroft Judo Club



This is one of Raymond's 'head-shots' from when he would sing professionally, all over the Midlands, as Ray Bennett.



HYMN

Eternal Father, strong to save,
Whose arm hath bound the restless wave,
Who bidd'st the mighty ocean deep
Its own appointed limits keep:
O hear us when we cry to Thee
For those in peril on the sea.

O Christ, whose voice the waters heard
And hushed their raging at Thy word,
Who walkedst on the foaming deep,
And calm amid the storm didst sleep:
O hear us when we cry to Thee
For those in peril on the sea.

O Holy Spirit, who didst brood
Upon the waters dark and rude,
And bid their angry tumult cease,
And give, for wild confusion, peace:
O hear us when we cry to Thee
For those in peril on the sea.

O Trinity of love and power,
Our brethren shield in danger's hour;
From rock and tempest, fire and foe,
Protect them wheresoe'er they go:
Thus evermore shall rise to Thee
Glad hymns of praise from land and sea.

William Whiting (1825-1878)



Raymond refereeing in 1984.

Photographer: David Finch

FAREWELL

CLOSING WORDS

MUSIC ON EXIT

Stardust

Nat King Cole



Raymond getting into it with Olympic and World champion, Yasuhiro Yamashita, whilst refereeing the women's British Open Championship at the Crystal Palace. Yamashita was coaching at the Budokwai in London, and had made time to visit the championships.

Photographer: David Finch



The family would like to thank everyone for their kind words and support at this sad time.

All are welcome for light refreshment at Mellish Rugby Club, Mapperley Plains, Arnold NG3 5RX.

Donations in memory of Raymond for **The Salvation Army** and the **RNLI** may be sealed in the donation envelope and placed in the box on leaving the service, left online at www.lymn.co.uk/obituaries or by scanning the QR code below or sent care of

A.W. LYMN

*The Family Funeral Service**

St. Albans House
32 High Street
Arnold
NG5 7DZ

www.lymn.co.uk

CCLI Copyright Licence No. 508305

