



Service of celebration for the life
ANDREW JAMES BIRCH
'BIRCH'

15th April 1981 - 18th December 2025

Gedling Crematorium Chapel,
Catfoot Lane, Nottingham NG4 4QH
Thursday 26th February 2026 at 11.00 am





ORDER OF SERVICE

MUSIC AS WE ENTER THE CHAPEL

Over The Rainbow

by Jeff Beck

WELCOME AND INTRODUCTION

Civil Celebrant, Brendan Flanagan



A TRIBUTE TO ANDREW
from his family

A MESSAGE TO ANDREW
from Sengsuely (Su)
read by his brother, Nick

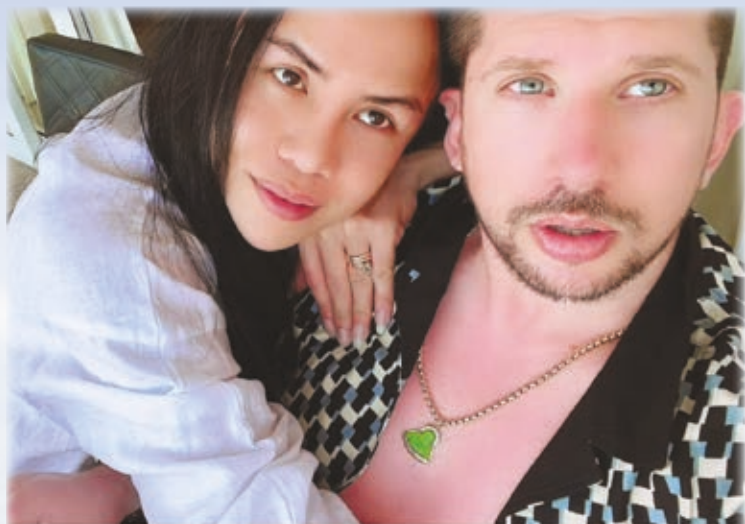
REFLECTION MUSIC
He Ain't Heavy, He's My Brother
by The Hollies

A TRIBUTE TO BIRCH
from his best friend, Kye



LIFE MEMORIES AND PHOTOS
words and video by Andrew's friend, Lewis

MESSAGES
from friends and colleagues around the world





A POEM

by Thich Nhat Hanh

read by Andrew's cousin, Aimee

There is a Buddhist monk,
Thich Nhat Hanh who spoke about love and impermanence,
using the image of a cloud.

He reminded us that when something we love changes form,
it is not gone - it continues.

The cloud becomes rain.

And if we look closely, we can still see it,
still feel it, still be nourished by it.

He also said:

“The person you believe is already lost is not lost.

He is still there in other forms.

Look for him inside yourself.

Look for him in your children.

That person is still available in the here and now.”

And that feels true for Andrew.

Because he isn't gone
he lives on in the calm he brought,
the lessons he shared,
the laughter that still rises,
and the love he left behind.

Always out there.

Always with us.

Living life.



BLESSING OF REST

I THOUGHT OF YOU TODAY

I thought of you with love today, but that is nothing new.


I thought about you yesterday and days before that too.

I think of you in silence, I often speak your name.

All I have are memories and your picture in a frame.

Your memory is my keepsake, with which I'll never part.

God has you in his keeping; I have you in my heart.



MUSIC AS WE LEAVE THE CHAPEL
My Way
by Joshua Quimby





Barbara, Christopher and Nick wish to thank you all for joining them at this service today and for the cards, letters and messages of condolence received in their sad loss.

Following the service, refreshments will be available to family and invited guests at the Mapperley Golf Club, Central Avenue, Mapperley NG3 5LD, where we will continue to remember Andrew and celebrate his life.

Donations in memory of Birch for **Emmanuel House** or the **British Heart Foundation** may be sealed in the donation envelope and placed in the box on leaving the service, left online at www.lymn.co.uk/obituaries or by scanning the QR code below or sent care of



A.W. LYMN

The Family Funeral Service

Robin Hood House
Robin Hood Street
Nottingham
NG3 1GF

www.lymn.co.uk

CCLI Copyright Licence No. 508305